

STATE OF MINNESOTA, }
COUNTY OF MURRAY, } ss.

I hereby certify that the within Instrument
was filed in this office for record on the
6TH day of FEBRUARY A.D. 20 19
at 11:00 o'clock A. M, and was duly
recorded as Document No. _____

Colleen C. Larson
County Recorder

Index No. _____ J-7

CERTIFICATE OF LOCATION OF GOVERNMENT CORNER

NORTH QUARTER Corner of Section 17, Township 105 N, Range 43 W

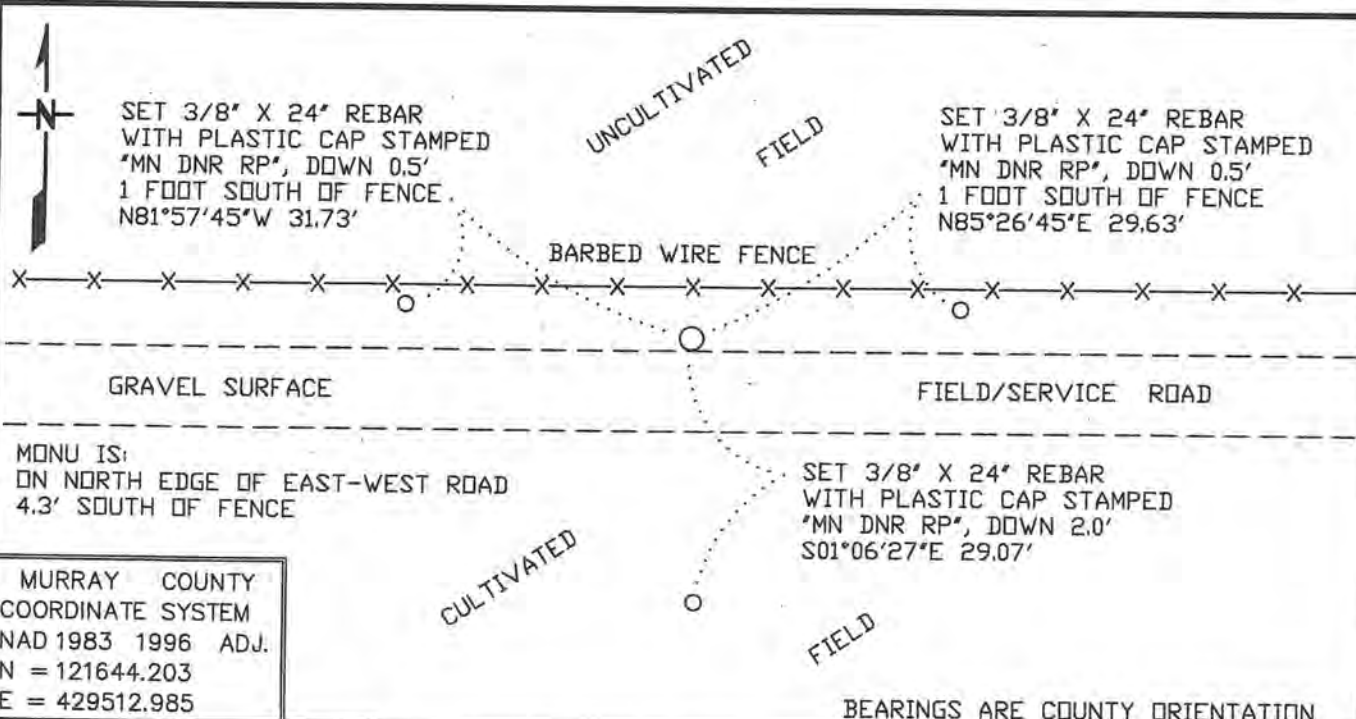
5TH Principal Meridian, State of Minnesota, County of MURRAY

At the corner location shown on the sketch:

On 5/1/2018 found an IRON PIPE WITH PLASTIC RLS CAP #43844, DOWN 1 FOOT
DATE

left monument as found, lowered monument, removed monument (explain)

On _____ Placed a _____
DATE



Statement of evidence for this corner location is on back of this page.

JAN 2019
NPB00139

I hereby certify that this plan, specification, or report was prepared by me or under my direct supervision and that I am a duly Licensed Land Surveyor under the laws of the State of Minnesota.

SIGNATURE Bruce W. Shepherd
BRUCE W. SHEPHERD

DATE 2/5/19

License Number 17003

North Quarter Corner of Section 17, Township 105 North, Range 43 West

The DNR Division of Lands and Minerals contacted the following for survey information:

Website - mngeo.state.mn.us for GLO plat and field notes

Website - murray-countymn.com for section and quarter section corner information

Murray County Recorder's Office

Bueltel-Moseng Land Surveying, Inc. of Marshall

Ulteig Engineering

Nyberg Surveying of Alexandria

- 1866 U.S. General Land Office notes, obtained from mngeo.state.mn.us, show the corner marked with a post, in a mound. The corner is shown:
40.16 chains (2650.56 feet) from adjoining section corners
- 1908 Plat Books for Cameron Township, obtained from the County Recorder's Office, show property
1926 divisions east, west and south in the area of the corner.
- 2009 March 5, a Certificate of Location of Government Corner, obtained from the County Recorder's Office, which is also on Website - murray-countymn.com, signed by Daniel Bueltel, PS No 43844, shows that a 1 inch pipe with seal #43844 was set for the corner, midway and on line between adjoining section corners. The following ties are shown to the corner:
4.3 feet south of an east-west fence
nail and seal in power pole, northwest, 40.68 feet
nail and seal in fence post, west-northwest, 83.25 feet
- 2016 December 22, an ALTA/NSPS Land Title Survey for Valley View Transmission, LLC, Murray County, obtained from Nyberg Surveying, by Micah T. Radach, PS No 51816, shows that an iron monument with RLS 43844 was found at the corner. The corner is shown:
2643.84 feet from the northeast corner of Section 17
2643.94 feet from the northwest corner of Section 17
- 2018 May 1, the DNR Division of Lands and Minerals found a plastic capped iron pipe, down 1 foot, at the corner. Searched for but found no evidence of the two 2009 record ties. The capped iron pipe was found to be:
4.3 feet south of an east-west fence
2643.83 feet from the northeast corner of Section 17
2643.90 feet from the northwest corner of Section 17
0.06 of a foot north and 0.04 of a foot east of the lost position

Analysis of the above information led the DNR Division of Lands and Minerals to conclude that the found plastic capped iron pipe marks the lost position of the corner.